



Newsletter No. 4

6/13/2023



Dear valued customers,

Hello from all of us at Jack Home Construction. We are not only dedicated to delivering the highest quality new home construction and renovation services, but also to helping you design and improve your home. Our team of experts is always on the lookout for the latest trends and advancements in the industry to ensure that your home is not only functional, but also a beautiful and inviting space. We hope you find this newsletter helpful.

Newsletter No. 4 Contents:

COMPANY UPDATES

- The Lakehouse Custom Home
- We're Featured In the Lake of Egypt Living Magazine
- Our New Portfolio Page On Our Website

INDUSTRY NEWS

- Wafer Lights

CURRENT TRENDS

- Freestanding tubs

COMPANY UPDATES

Lakehouse at the Peninsula

This is the latest custom designed home that we have finished in the Peninsula subdivision on the Lake of Egypt. During this build, some of the visitors that came through said that this home is larger on the inside than it looks from the road. A little more than 4,000 square feet of living space, the home has a full walkout finished basement that steps out onto a deck that leads down to the lake.



The first floor contains a large great room with a high cathedral ceiling, anchored by a heavy limestone gas fireplace. The lake can be viewed from six large windows on the east side of the great room. These windows are made up of three large rectangular fixed panes on the bottom and three large trapezoidal windows above them. These windows look out across the upper deck through the forest down to the water's edge.

The first floor has an open design so that the kitchen, dining area, foyer, and powder room can all be seen from the great room. The kitchen layout includes a long wall of high and low

cabinets with a gas stove and oven in the center opposite a large island with a countertop that extends along two sides for bar stools.











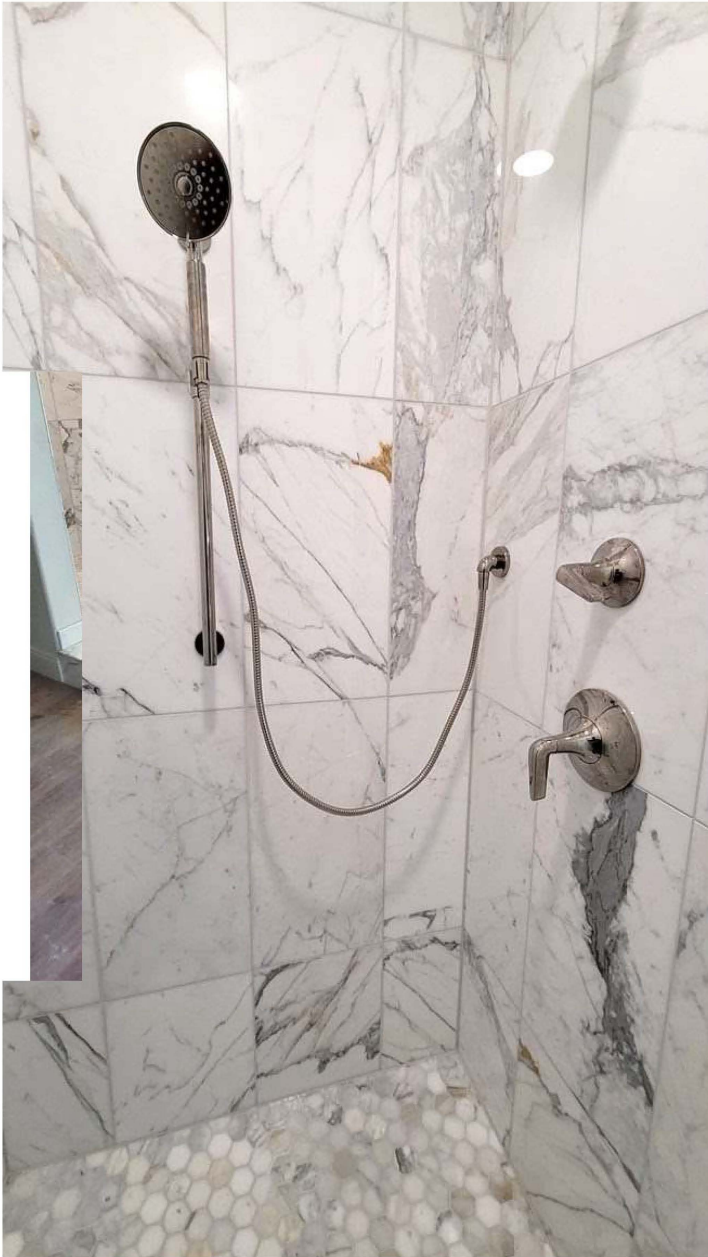


Toward the north side is the entry to the hallway leading to the kid's room and the master bedroom and master bath. The master bedroom also has a view of the lake and access to the upper deck.

The kids bathroom was designed with a black and white vertical tile shower design, with black marble-styled tile for the floor, and dark green walls.



The master bath is complete with an elegant standalone tub and shower space that is on a step up from the main bathroom floor, designed with a white and gray marble-styled tile floor area, separating it from the rest of the bathroom.



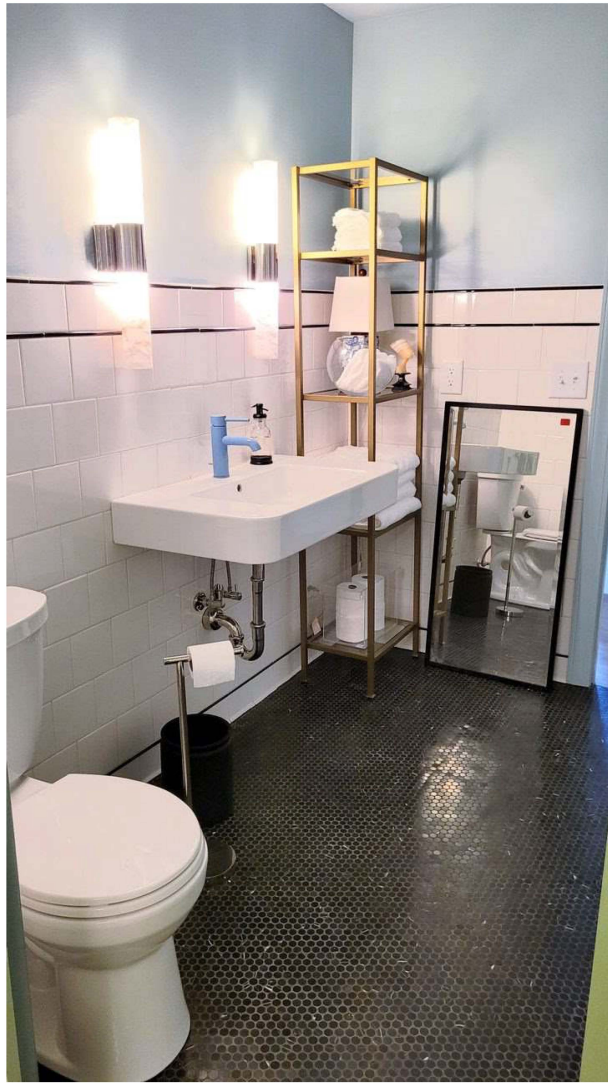
The basement contains a great room, a movie room, a mud room, an office room, three bedrooms, two baths, and a utility room. A small storage room takes up the space under the stairway down to the basement. The great room and movie room take up the large center part of the basement.





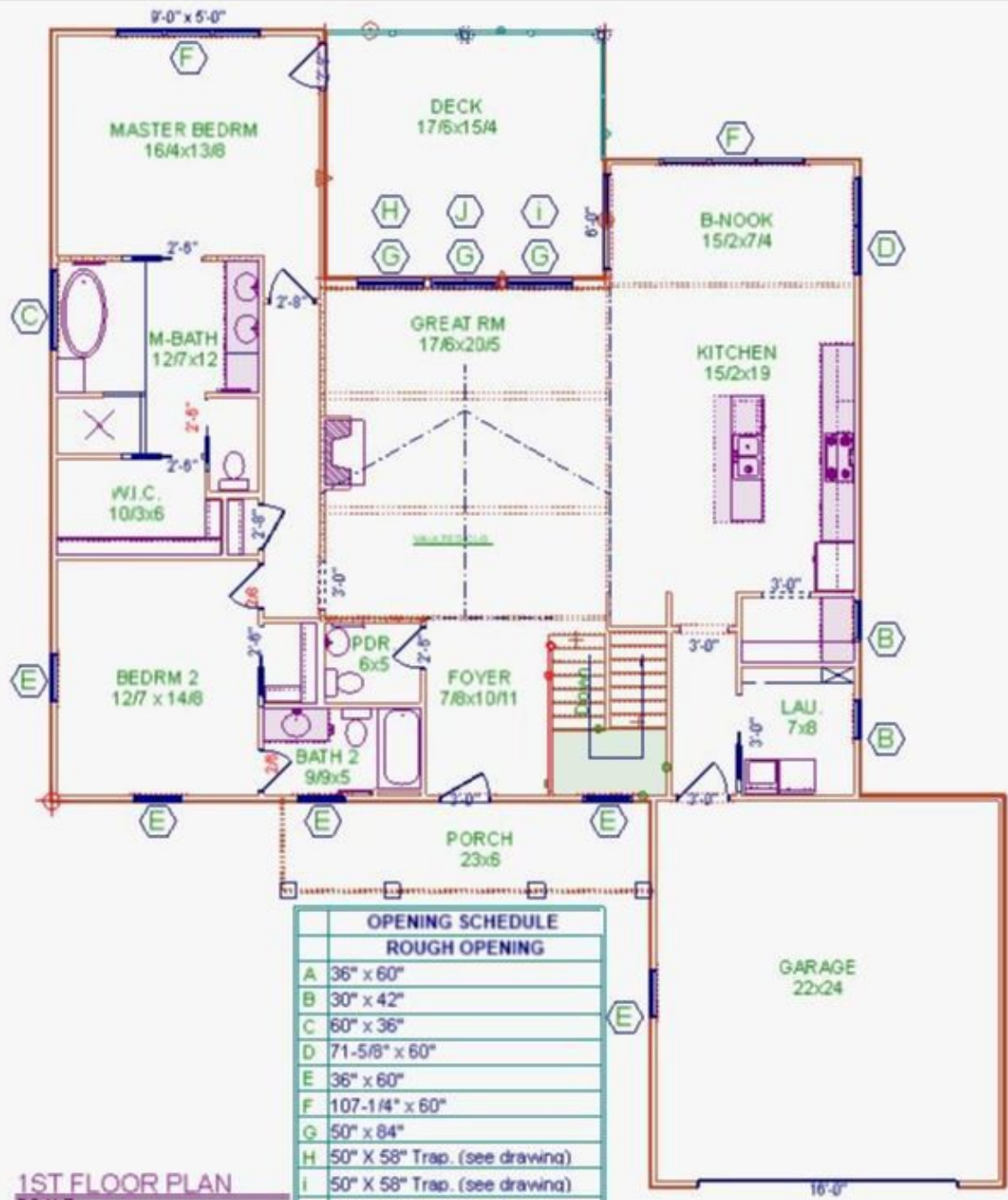
On the south side of the basement great room is a guest bath with a walk-in shower, called the lake bath. The lake bath is attached to the bedroom that the owners call a bunk room. It is designed to hold bunk beds for visiting kids. Niches are placed in the wall so that each kid on a bunk bed can store and charge their electronic devices.

The north side of the basement contains the office which has a view of the lake and access to the lower deck. The other two guest bedrooms are also on the north side and are separated by a Jack and Jill bathroom which includes two sets of vanity and toilet separated by a tub/shower room.



Here are some of our 3D renderings of the lakehouse that we created using our software, as well as the floor plans of the house.

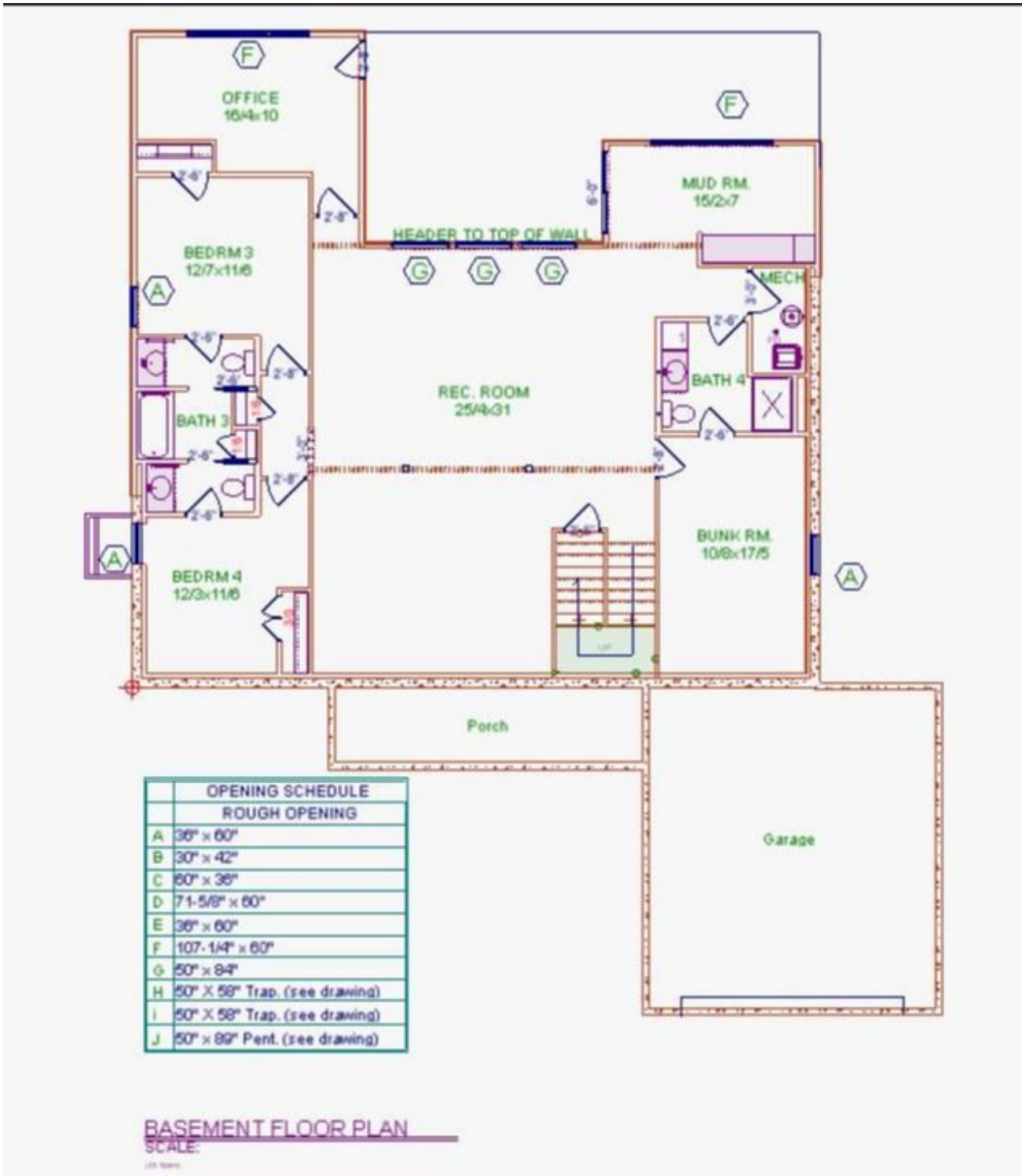




OPENING SCHEDULE	
ROUGH OPENING	
A	36" x 60"
B	30" x 42"
C	60" x 36"
D	71-5/8" x 60"
E	36" x 60"
F	107-1/4" x 60"
G	50" x 84"
H	50" X 58" Trap. (see drawing)
I	50" X 58" Trap. (see drawing)
J	50" x 89" Pent. (see drawing)

1ST FLOOR PLAN
SCALE:

1/8" = 1'-0"



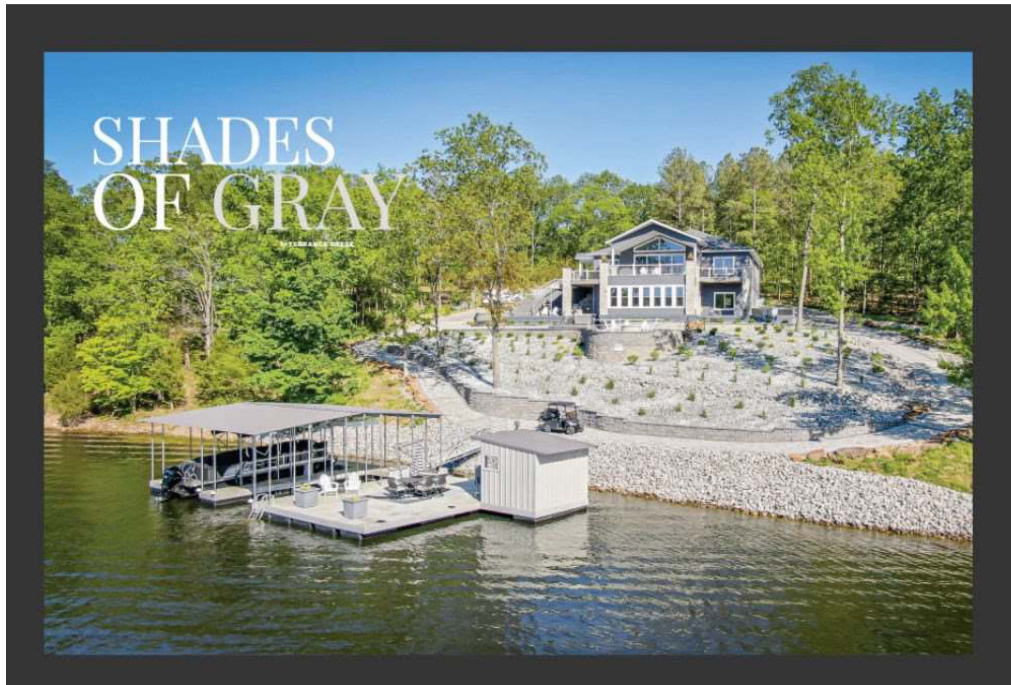
[View Instagram Reel Tour: Part 1](#)

[View Instagram Reel Tour: Part 2](#)



We Are Featured In The Lake of Egypt Living Magazine

One of the homes we built was recently featured in a local magazine, Lake of Egypt Living, Vol 4. Issue 2, Memorial Day 2023, dated May 19, on pages 32 - 41.



Here's an excerpt from the magazine:

“ Johnson often found himself making the 125-mile trip to the site twice a week, just to spend a couple of hours with his contractor and then drive back to O’Fallon. “Building remotely, you have to be pretty well organized,” he says. “You must have a lot of trust with your general contractor.”

The Johnsons had selected Jack Home Construction as the general contractor and have been very happy with the outcome. ”

[View The Magazine](#)



We featured this grand home in a blog post back in October 2022. In the post, you can see more photos of the house, our 3D renderings, as well as the floor plan.

[View Our Blog Post](#)

Introducing Our Portfolio Page

We are happy to announce that we now have a portfolio page on our website! This will be a great page for viewing gallery images of our custom built homes. We'll be adding more as we go.

GALLERY

We've included some of our 3D renderings as well as the floor plan of the house.
We offer 3D renderings as a free service to all our customers when designing their home.

The gallery consists of 12 images arranged in a grid. The top row shows a wide view of the house by the water, a close-up of the porch, a view of the driveway, and a 3D rendering of the house. The middle row includes another 3D rendering, a view of the house from a different angle, a floor plan, and another 3D rendering. The bottom row features a close-up of the porch, an interior view of the ceiling, a view of the house from a different angle, and a second floor plan.

[View Portfolio Page](#)

INDUSTRY NEWS

Wafer Lights

Wafer lights, also known as slim LED recessed lights, have become increasingly popular in new residential homes due to their slim and low-profile design that allows them to blend seamlessly into ceilings and walls.



These lights are typically made with LED light sources, making them energy-efficient and long-lasting. They are also easy to install and can be wired directly into the electrical system of a

home. We started using wafer light solutions in our new homes about three years ago and all our customers have loved them. They have advantages in areas like adjustable color temperatures, flexibility of location (they fit almost anywhere compared to traditional can lights), you can use 6 inch and 4 inch sizes, they are dimmable, and they work in wet areas either outside or in a shower.

COLOR

One of the key advantages of wafer lights is their ability to offer different color temperatures. Color temperature is measured in Kelvin (K) and refers to the warmth or coolness of a light source. Lower Kelvin temperatures produce warm, yellowish light, while higher Kelvin temperatures produce cool, bluish light.

Wafer lights can be set to different color temperatures to create the desired ambiance for a room. For example, a warmer color temperature of around 2700K can create a cozy and intimate atmosphere in a bedroom, while a cooler color temperature of around 4000K may

be more suitable for a kitchen or workspace where brighter and more stimulating light is needed.

Some wafer lights are designed to be dimmable, allowing homeowners to adjust the brightness and color temperature to their liking. This gives greater control over the amount of light in a room and can be useful for creating different moods or for adjusting to different activities throughout the day.

AMBIANCE | Choose various colors throughout your home for different atmospheres



SIZES

Wafer lights come in different sizes, including 6 in and 4 in, allowing homeowners to choose the size that best suits their needs and preferences. The larger 6 in wafer lights provide more light output and are ideal for larger rooms or areas that require more light, while the smaller 4 in wafer lights are better suited for smaller rooms or areas where a more focused light is needed.

OUTDOORANDINDOOR

Aside from indoor applications, wafer lights can also be used as outdoor soffit lights. Soffit lighting refers to lights that are installed in the underside of an architectural feature such as an eave or overhang.

Wafer lights are well-suited for this purpose because of their low-profile design, making them unobtrusive and visually appealing. Moreover, wafer lights can be used as shower lights, providing a safe and waterproof lighting solution for bathrooms. With an IP rating of 65 or higher, these lights can withstand moisture and splashes, making them suitable for wet areas such as showers or bathrooms. (The IP code or ingress protection code is a measure of how well a device is protected against water and dust.)



above image source: <https://www.homedepot.com/>



above image source: <https://www.sunco.com>

Here are some wafer lights that we recently installed in some cabins that we've been building.





Overall, wafer lights are a popular choice for new residential homes because they offer energy-efficient, easy-to-install, and customizable lighting solutions that can enhance the look and feel of any room.

When building your new home with us, we work together with you to design the lighting in your new home to make sure you have all your different lighting needs met in each room in the house.

CURRENT TRENDS

Freestanding Tubs



image source: <https://www.vintagetub.com/>

A trend that is currently growing in popularity is incorporating a standalone bathtub into your bathroom. We've recently installed several of these tubs for our clients.

Adding a freestanding tub to your bathroom not only enhances its style and elegance, but also transforms it into a tranquil retreat for relaxation. Their standalone nature creates a sense of openness and spaciousness, making them especially desirable for smaller bathrooms.

When it comes to freestanding tubs, there is a wide range of materials, styles, and shapes to choose from, providing ample options for customization and personalization.



image source: <https://www.signaturehardware.com/>

MATERIALS

Freestanding tubs can be made from various materials, each offering its own unique aesthetic and characteristics. Popular choices include:

1. **Acrylic:** Lightweight, durable, and easy to clean, acrylic tubs are a common choice. They come in a variety of colors and finishes.
2. **Cast iron:** Known for their durability and heat retention, cast iron tubs have a classic and timeless appeal. However, they tend to be heavier and may require additional structural support.
3. **Stone:** Natural stone tubs, such as marble or granite, exude luxury and sophistication. They are durable but often require more maintenance.
4. **Copper:** Copper tubs have a distinctive, warm appearance and offer excellent heat retention properties. They develop a unique patina over time, adding to their charm.

STYLES

Freestanding tubs come in different styles, catering to various design preferences. Some popular styles include:

1. **Modern/Contemporary:** Clean lines, minimalistic shapes, and sleek finishes characterize modern freestanding tubs, creating a minimalist and sophisticated look.
2. **Clawfoot:** Inspired by vintage designs, clawfoot tubs feature decorative feet that add a touch of old-world charm and elegance.

3. Slipper: Slipper tubs have one end higher and sloping, allowing for a more comfortable reclining position. They often come with ornate details, emphasizing a classic and luxurious feel.

SHAPES

Freestanding tubs are available in a range of shapes, allowing homeowners to find the perfect fit for their space and personal taste. Common shapes include:

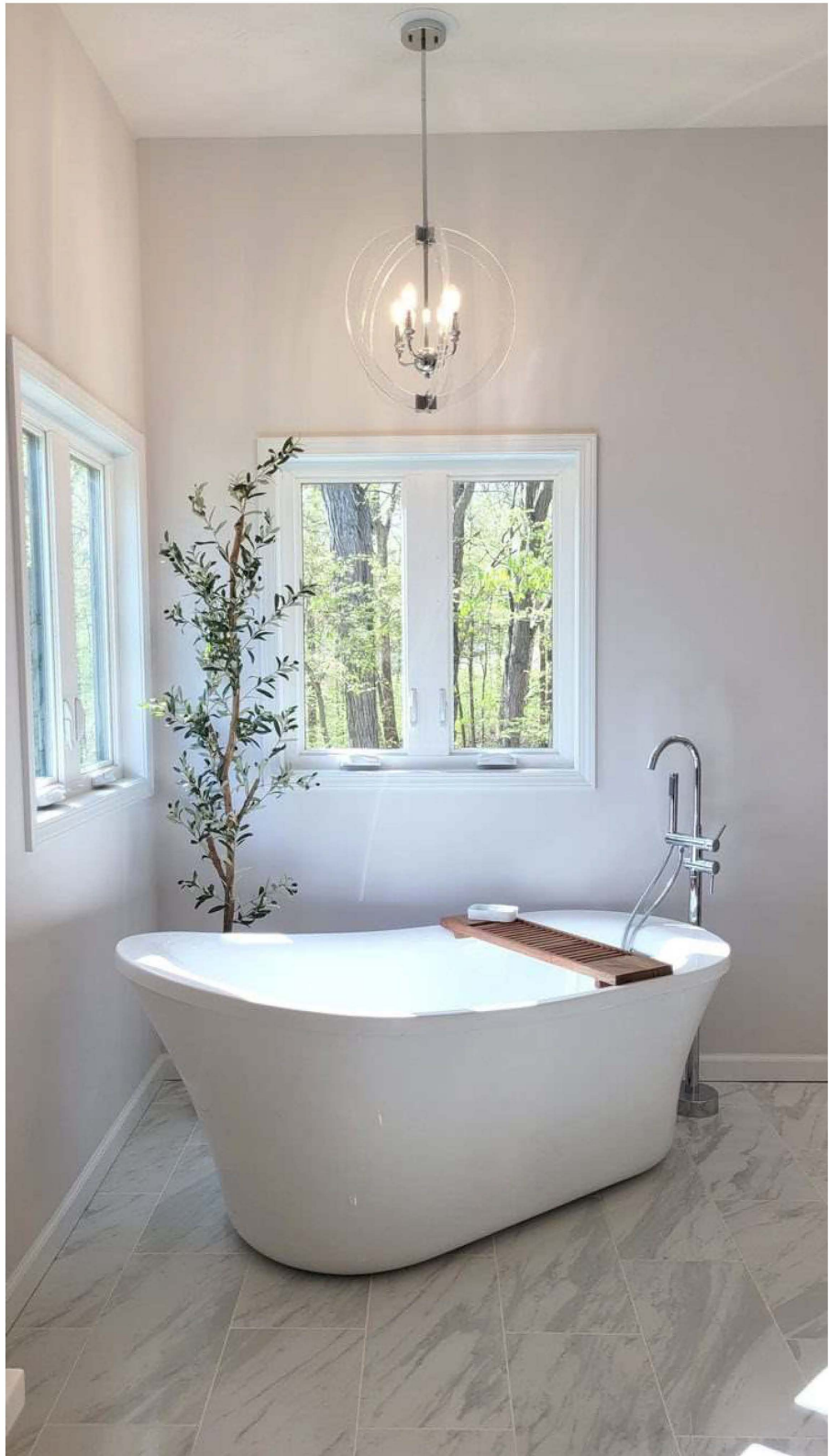
1. Oval: Oval-shaped tubs are versatile and work well in various design schemes. They offer a classic, timeless look.
2. Rectangular: Rectangular tubs have clean, straight lines, making them ideal for contemporary and modern aesthetics.
3. Round: Round tubs can add a unique and eye-catching element to a bathroom, creating a focal point that stands out.



image source: <https://www.signaturehardware.com>

With such a diverse array of materials, styles, and shapes to choose from, homeowners can select a freestanding tub that not only complements their bathroom's design but also suits their individual preferences and needs.

These next three pictures are tubs that we've recently installed for some of our clients.





If you would love to turn your bathroom into a spa, talk with us. We'll help you choose and install the right freestanding tub for you.

We hope this newsletter has provided valuable information and inspiration for your next home improvement project. As always, if you have any questions or would like to schedule a meeting, please don't hesitate to reach out.

Best regards, The Jack Home Construction Team

618-995-2288

info@jackconstruction.com

